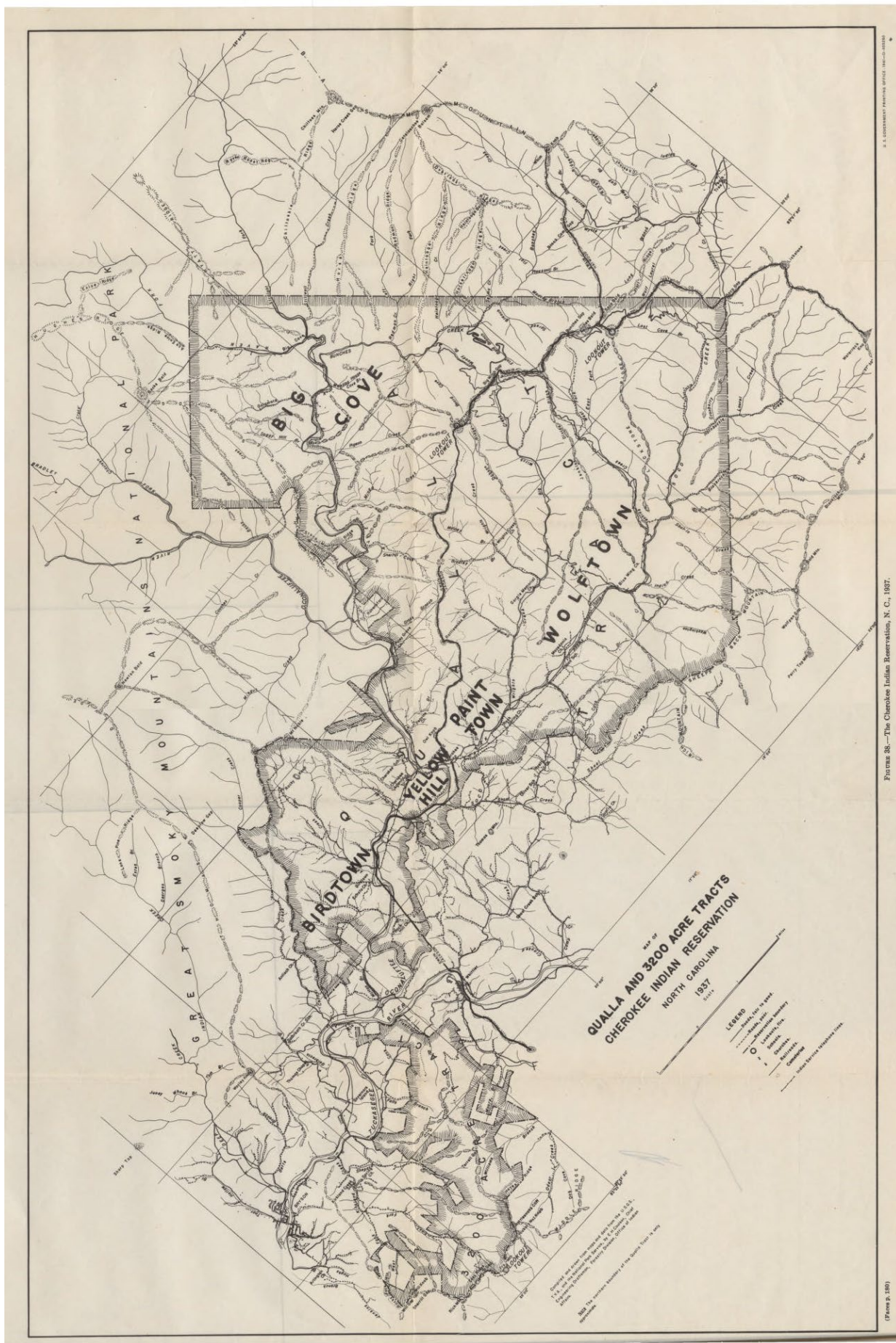


C.C. Boyce, "Map of the Former Territorial Limits of the Cherokee..." (Smithsonian Institution – Bureau of Ethnology, 1884) Library of Congress, G3861.E1 1884.R6TIL



Detail of map showing the Great Island on the Holston River and distance from Jefferson & Boone, N.C.





U.S. Office of Indian Affairs, "Qualla and 3200 Acre Tracts, Cherokee Indian Reservation, N.C., 1937," (Washington, D.C.: U.S. Government Printing Office, 1941), C970.03 G46e, U1937, UNC collection